

IMAGES IN MEDICINE

Right Ventricular Septal Pacing: In Lieu of Biventricular Pacing for Cardiac Resynchronization in a Patient With Right Bundle Branch Block? *

Antonis S. Manolis, MD, Panagiotis Tolis, MD

ABSTRACT

A 71-year-old male with ischemic cardiomyopathy, severe systolic left ventricular dysfunction and symptomatic heart failure was not considered a good candidate for implantation of a biventricular pacing system to effect cardiac resynchronization due to underlying right bundle branch block (RBBB). He received instead a dual-chamber implantable cardioverter defibrillation with the ventricular lead placed at an alternate site position at the high right ventricular septum. This resulted in significant narrowing of the QRS duration (resynchronization) with a good clinical response over short-term. The case illustrates a possible alternative approach to biventricular pacing for cardiac resynchronization in patients with RBBB.

A 71-year-old male patient with ischemic cardiomyopathy, severe systolic left ventricular dysfunction (left ventricular ejection fraction ~25-30%) and symptomatic heart failure (New York Heart Association-NYHA class III symptoms) was considered for implantation of a biventricular pacing system. However, the electrocardiogram (ECG) displayed a right bundle branch block (RBBB) with a QRS complex duration of 160 ms (Fig. 1, upper panel). Due to the presence of non-left bundle branch block (non-LBBB) and data reporting a lower possibility of responding to cardiac resynchronization therapy (CRT) with biventricular pacing, it was finally decided to proceed with implantation of a dual chamber automatic cardioverter defibrillator (ICD) rather than a biventricular ICD (CRT-D). Thus, a right atrial lead was implanted in the right atrial appendage, but the right ventricular pacing-defibrillator lead was not placed at the classical right ventricular apical position, but an alternate site position was selected at the high right ventricular septum (Fig. 2, arrow), due to data indicating a deleterious effect of right ventricular apical pacing. The procedure was uncomplicated and the patient's post-procedural course remained uneventful. A post-implant ECG (Fig. 1, lower panel) showed an LBBB-like paced QRS morphology but with a much shorter duration (110 ms) compared to pre-procedural ECG (pacing latency was very short and pacing threshold was low at 0.9 volts at 0.5 ms pulse width consistent with paraHisian pacing). The patient had a good clinical response to this type of right ventricular pac-

3rd Department of Cardiology, Athens University School of Medicine, Athens, Greece

KEY WORDS: right bundle branch block; heart failure; cardiac resynchronization therapy; biventricular pacing; right ventricular septal pacing; paraHisian pacing

ABBREVIATIONS

CRT = cardiac resynchronization therapy
CRT-D = CRT defibrillator
ECG = electrocardiogram
ICD = implantable cardioverter defibrillator
LBBB = left bundle branch block
NYHA = New York Heart Association
RBBB = right bundle branch block

Correspondence to:

Antonis Manolis, MD, 3rd Department of Cardiology, Athens University School of Medicine, Athens, Greece;
E-mail: asm@otenet.gr

Manuscript received June 24, 2014;

Revised manuscript received and accepted June 30, 2014

Conflict of Interest: none declared

* Reproduced with permission from *Rhythmias* 2015;10(3): 62-63 (www.rhythmias.gr)

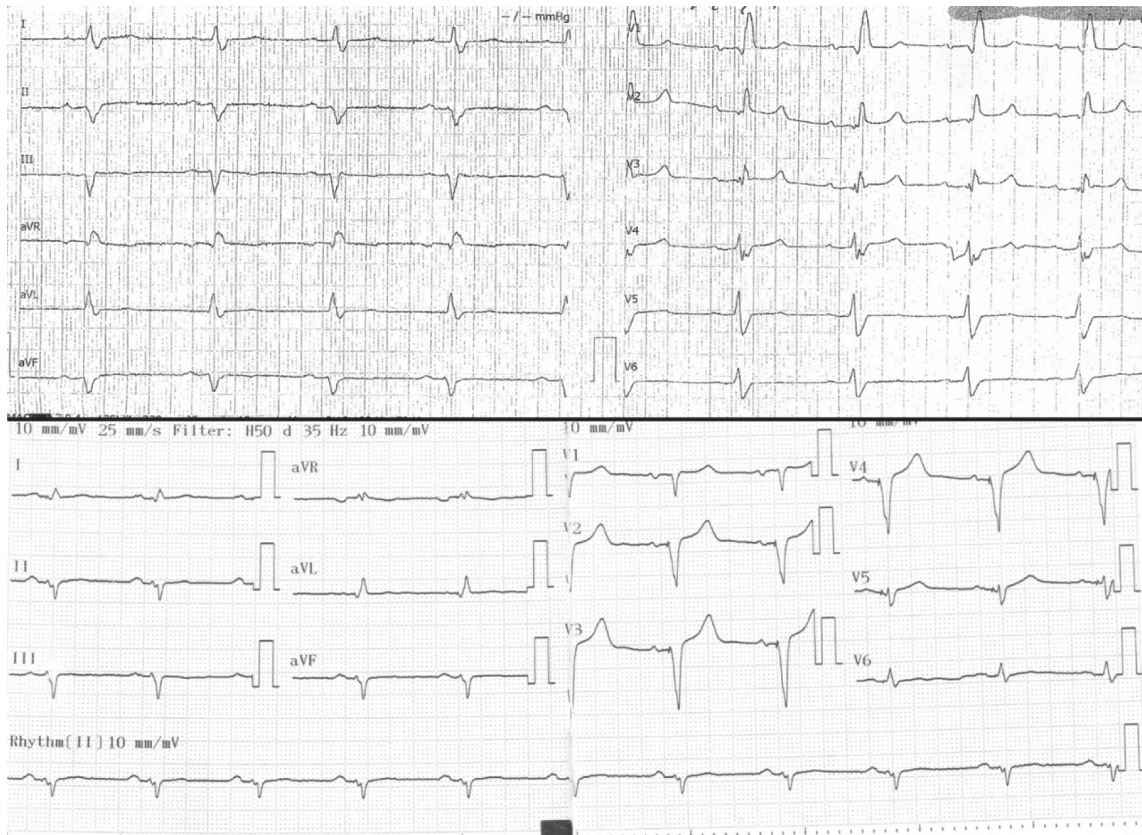


FIGURE 1. Upper panel: pre-procedural ECG; Lower panel: post-implantation ECG.

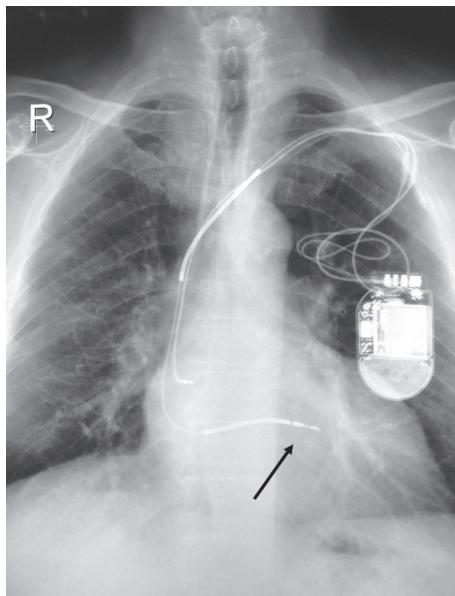


FIGURE 2. Chest X-ray (anteroposterior view) indicates the position of the two leads; the atrial lead was placed in juxtaposition to the right atrial appendage, and the right ventricular lead at the right ventricular septum (mid-septal position, arrow).

ing over the subsequent 3 weeks with amelioration of his heart failure symptoms. It remains to see whether this improvement lasts over mid- and long-term follow-up.

•••

Cardiac resynchronization therapy (CRT) has become standard practice for patients with reduced ($\leq 35\%$) ejection fraction heart failure and cardiac dyssynchrony as manifested by a prolonged QRS complex (≥ 120 - 130 ms) on the surface ECG.¹⁻³ Greatest benefit is derived when the QRS complex has a left bundle branch block (LBBB) morphology.³ However, patients with a right bundle branch block (RBBB) may have a limited response to CRT.⁴ Moreover, the procedure of placing the left ventricular lead in a suitable coronary sinus tributary may be cumbersome and time-consuming.^{1,2} Nevertheless, in some patients with RBBB and very prolonged (> 150 ms) QRS complex, it may be worth trying to effect CRT via bi-ventricular pacing.³

In the present case the decision was made against bi-ventricular pacing with an attendant longer-duration and higher-risk procedure. Thus, a standard dual-chamber ICD was implanted. However, due to reports and data of a possible deleterious effect of right ventricular apical pacing,⁵

alternate site pacing was selected for this patient. Particular attention was paid to aim for a para-Hisian position, which was apparently successful as the resultant narrowing of the QRS complex was highly suggestive of such a position, despite the lack of guidance by endocardial electrogram recordings. This chosen strategy finally paid off and cardiac resynchronization was attained as indicated by the QRS narrowing (Fig. 1, lower panel).

Right ventricular septal pacing has been shown to shorten and almost normalize the QRS duration in patients with RBBB.⁶ A favorable effect of septal pacing has been suggested compared to right ventricular apical pacing, particularly in patients with compromised left ventricular function.⁷ This type of selective site pacing has also been suggested as an alternative approach for CRT in patients with RBBB and/or unsuccessful left ventricular lead implantation.^{8,9} Favorable results of resynchronization may be obtained with this approach, but there have been no studies comparing this approach with standard biventricular pacing.

Biventricular pacing remains the standard means to achieve CRT, but in some patients with RBBB, whereby one expects limited response to CRT via the conventional approach or in difficult procedures of placing a left ventricular lead, right ventricular septal pacing with an aim to approximate a para-Hisian position may be an alternative approach to obtaining CRT.¹⁰ Future randomized studies will be needed to address the issue whether QRS normalization obtained via paraHisian pacing also affords clinical benefit in heart failure patients.

REFERENCES

1. Manolis AS. Cardiac resynchronization therapy in congestive heart failure; ready for prime time? *Heart Rhythm* 2004;1:355-363.
2. Leyva F, Nisam S, Auricchio A. 20 years of cardiac resynchronization therapy. *J Am Coll Cardiol* 2014;64:1047-1058.
3. Brignole M, Auricchio A, Baron-Esquivias G, et al. 2013 ESC Guidelines on cardiac pacing and cardiac resynchronization therapy: the Task Force on cardiac pacing and resynchronization therapy of the European Society of Cardiology (ESC). Developed in collaboration with the European Heart Rhythm Association (EHRA). *Eur Heart J* 2013;34:2281-2329.
4. Cunnington C, Kwok CS, Satchithananda DK, et al. Cardiac resynchronisation therapy is not associated with a reduction in mortality or heart failure hospitalisation in patients with non-left bundle branch block QRS morphology: meta-analysis of randomised controlled trials. *Heart* 2015 Feb 12. pii: heartjnl-2014-306811. doi: 10.1136/heartjnl-2014-306811. [Epub ahead of print]
5. Manolis AS. The deleterious consequences of right ventricular apical pacing: time to seek alternate site pacing. *Pacing Clin Electrophysiol* 2006;29:298-315.
6. Giudici MC, Abu-El-Haija B, Schrumpp PE, Bhawe PD, Al Khiami B, Barold SS. Right ventricular septal pacing in patients with right bundle branch block. *J Electrocardiol* 2015;48:626-629.
7. Hussain MA, Furuya-Kanamori L, Kaye G, Clark J, Doi SA. The effect of right ventricular apical and non-apical pacing on the short- and long-term changes in left ventricular ejection fraction: a systematic review and meta-analysis of randomized-controlled trials. *Pacing Clin Electrophysiol* 2015 Jun 22. doi: 10.1111/pace.12681. [Epub ahead of print]
8. Siliste C, Suran MC, Margulescu AD, Vinereanu D. Right ventricular electrical and mechanical synchronization by properly timed septal pacing in a patient with right bundle branch block and first degree AV block--a case report. *Ann Noninvasive Electrocardiol* 2015;20:193-197.
9. Alhous MH, Small GR, Hannah A, Hillis GS, Frenneaux M, Broadhurst PA. Right ventricular septal pacing as alternative for failed left ventricular lead implantation in cardiac resynchronization therapy candidates. *Europace* 2015;17:94-100.
10. Zanon F, Barold SS. Direct His bundle and paraHisian cardiac pacing. *Ann Noninvasive Electrocardiol* 2012;17:70-78.